



TS series high performance HMI

Automation Trusted Partner



XINJE Wechat

XINJE

WUXI XINJE ELECTRIC CO.,LTD.

Address: No.816,Jianzhu West Road,Binhu District,Wuxi City,Jiangsu Province,China

TEL: 86-0510-85134136

Fax: 86-0510-85111290

Website: www.xinje.com

Email: sales@xinje.com

Technical Service Hotline
400-885-0136

TS series high performance HMI

Linux system and efficient A7 processor are adopted
Smoother man-machine experience



TS5L series IOT HMI

TS3 series standard HMI

High Performance Processor

ARM Cortex-A7 processor is adopted, with main frequency of 1GHz, built-in 128MB memory and expandable flash disk storage.

High Efficiency System

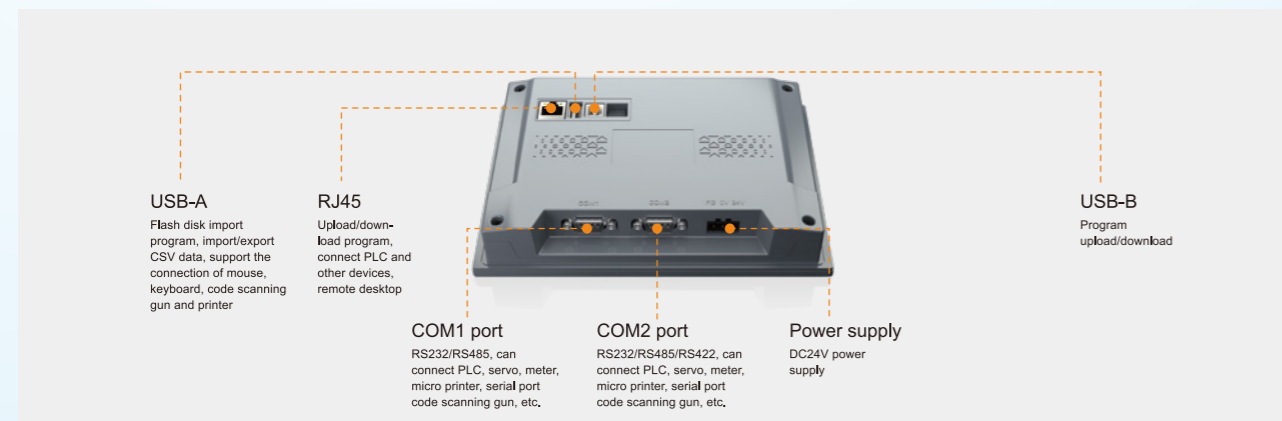
Based on the Linux system, the multi-task processing mechanism greatly improves the system response speed and makes the operation more efficient and fast.

Multidirectional Installation

It supports free installation in four directions, which can meet the needs of different occasions.



Rich Device Connectivity



Standard HMI

TS3 series 10.1" 7"

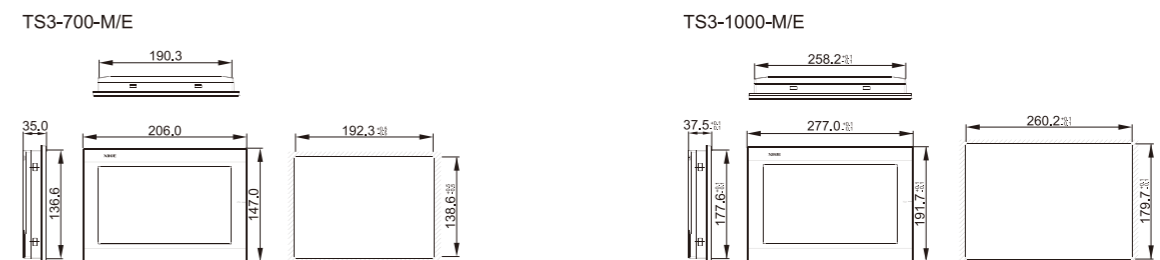
- Cortex-A7 processor is adopted, with main frequency of 1GHz and built-in 128MB memory
- Rich functions, suitable for a variety of occasions
- It has stronger tightness and better protection against dust, water vapor and scrap
- The product structure conforms to the lightweight design, which is light and slim
- The new touchWin Pro software is fully upgraded



Product specification

Product model		TS3-700-M	TS3-700-E	TS3-1000-M	TS3-1000-E	
Product features	Dimension	7"		10.1"		
	Type	16.77 million colors				
	Resolution	800*480		1024*600		
	Brightness	200 cd/m ²				
	Touch panel	Four-wire resistive touch panel				
	Service life	Above 50000 hours, ambient temperature 25°C, 24 hours operation				
Interface	Processor	Cortex-A7 1GHz				
	Memory	128MB				
	COM1 port	RS232/RS485				
	COM2 port	RS232/RS485/RS422				
Electrical features	Ethernet port	/	Standard RJ45	/	Standard RJ45	
	USB-A port	Flash disk port, USB2.0 standard				
	USB-B port	USB download port, USB2.0 standard				
	Input voltage	DC24V (voltage range: DC22~DC26V)				
Environment	Power	5W		8W		
	Allowable instantaneous power failure	Below 10ms (actual power loss less than 1s)				
	Withstand voltage	AC1000V, 10mA, less than 1 minute (signal and ground)				
	Insulation impedance	Above DC500V, 10MΩ (signal and ground)				
Structure	Operation temperature	0-50°C				
	Storage temperature	-20-60°C				
	Ambient humidity	10%RH-90%RH (no condensation)				
	Vibration resistance	10-25Hz (X, Y, Z direction each 30 minutes 2G)				
	Anti-interference	Voltage noise: 1500Vp-p, pulse width 1us, 1 minute				
	Ambient air	No corrosive gas				
Structure	Protection level	Front panel IP65				
	Cooling method	Natural air cooling				
	External dimension (mm)	206.0*147.0*35.0		277.0*191.7*37.5		
	Opening size (mm)		192.3*138.6(±0.5)		260.2*179.7(±0.5)	

Appearance dimension drawing (Unit: mm)



IOT HMI

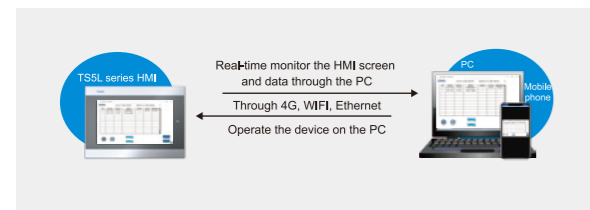
TS5L series 10.1" 7"

- Remote functions: remote desktop (PC remote control HMI real-time screen), remote transparent transmission (remote upload/download PLC program), remote download (updating HMI program)
- It supports audio output and can output various audio through external speakers
- Cover mainstream information interaction protocols and support MQTT/TCP IP
- Standard network port, optional WIFI/4G module, networking through WIFI or 4G
- Edge calculation is conducive to data analysis and statistics



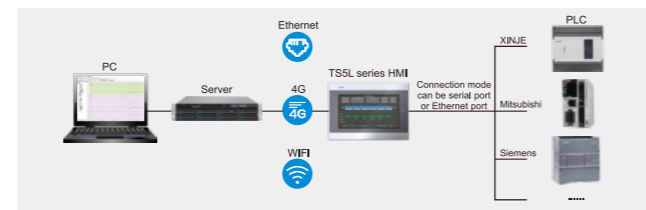
Remote Desktop

That is, VNC function, which supports PC or mobile synchronizing the screen and data of the HMI. It can monitor the HMI screen in real time and remotely control the touch screen without arriving at the site.



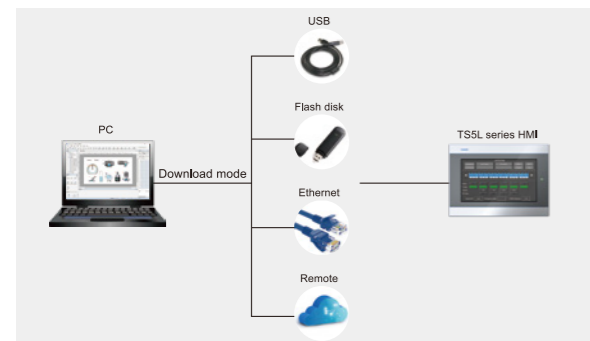
Remote Transparent Transmission

It supports remote uploading and downloading PLC program, which solves the trouble of no download cable and insufficient interface. The program can be downloaded to PLC through 4G or WIFI module.

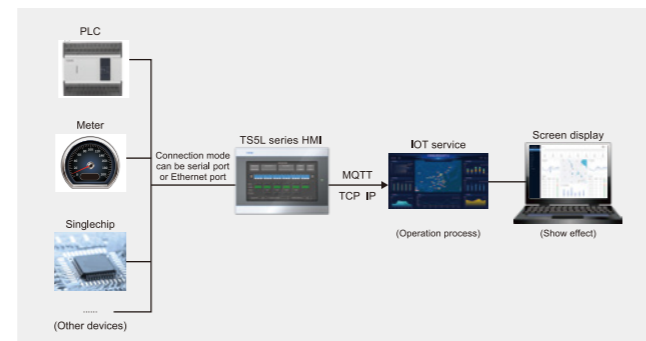


Download Programs in Multiple Ways

Support flash disk, LAN or remote upload/download HMI program.



Covering mainstream information exchange protocols, support MQTT/TCP IP.



Optional WIFI/4G Communication Expansion Board

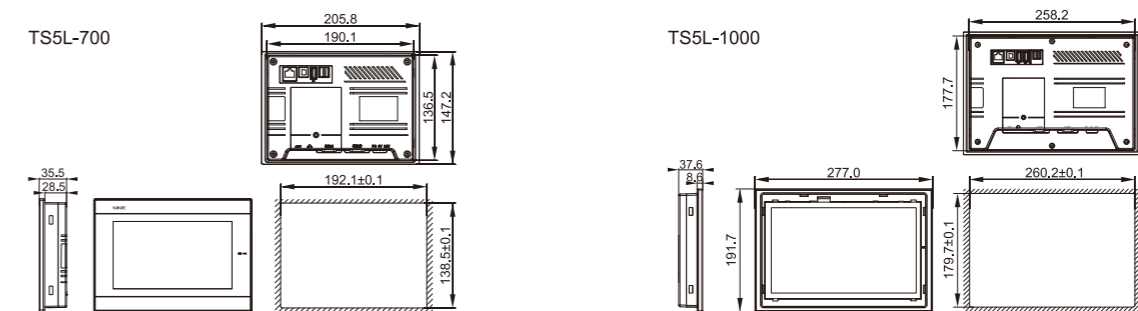
The HMI is equipped with a standard network port and supports WIFI/4G communication expansion board. It is integrated with TS5L and does not occupy excess space. 4G or WIFI communication expansion board can be switched freely according to the use occasion.



Product specification

Product model		TS5L-700	TS5L-1000
Product features	Size	7"	10.1"
	Type	16.77 million colors	
	Resolution	800*480	1024*600
	Brightness	200 cd/m²	
	Touch panel	Four-wire resistive touch panel	
	Service life	Above 50000 hours, ambient temperature 25°C, 24 hours operation	
Interface	Processor	Cortex-A7 1GHz	
	Memory	128MB	
	COM1 port	RS232/RS485	
	COM2 port	RS232/RS485/RS422	
	Ethernet port	Standard RJ45, 10/100M	
	USB-A port	Flash disk port, USB2.0 standard	
Electrical features	4G	Optional	
	WIFI	Optional	
	Input voltage	DC24V (voltage range: DC22~DC26V)	
	Power	5W	8W
	Allowable instantaneous power failure	Below 10ms (actual power loss less than 1s)	
	Withstand voltage	AC1000V, 10mA, less than 1 minute (signal and ground)	
Environment	Insulation impedance	Above DC500V, 10MΩ (signal and ground)	
	Operation temperature	0-50°C	
	Storage temperature	-20-60°C	
	Ambient humidity	10%RH~90%RH (no condensation)	
	Vibration resistance	10~25Hz (X, Y, Z direction each 30 minutes 2G)	
	Anti-interference	Voltage noise: 1500Vp-p, pulse width 1us, 1 minute	
Structure	Ambient air	No corrosive gas	
	Protection level	Front panel IP65	
	Cooling method	Natural air cooling	
	External dimension (mm)	205.8*147.2*35.5	277.0*191.7*37.6
	Opening size (mm)	192.1*138.5(±0.1)	260.2*179.7(±0.1)

Appearance dimension drawing (Unit: mm)

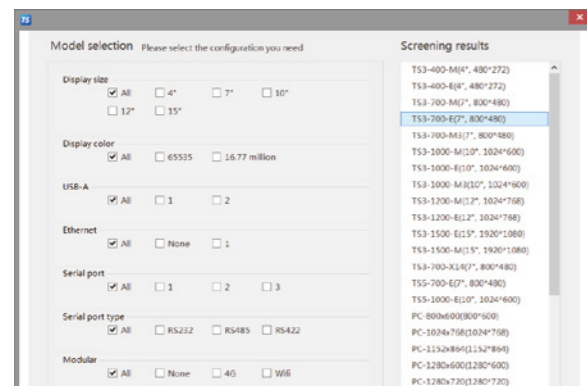


TouchWin Pro software



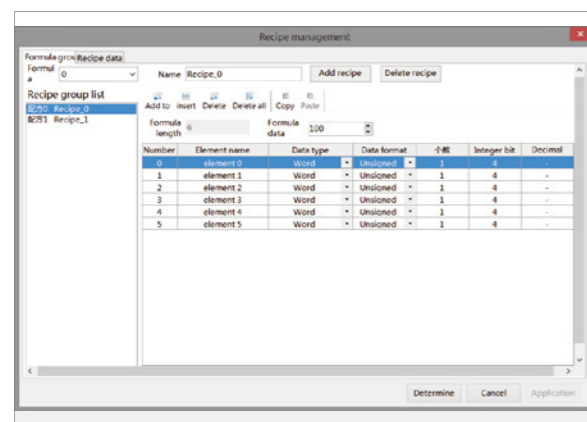
Built-in Model Selection Function

The software has built-in model selection function, which can quickly match the required product model according to your requirements.



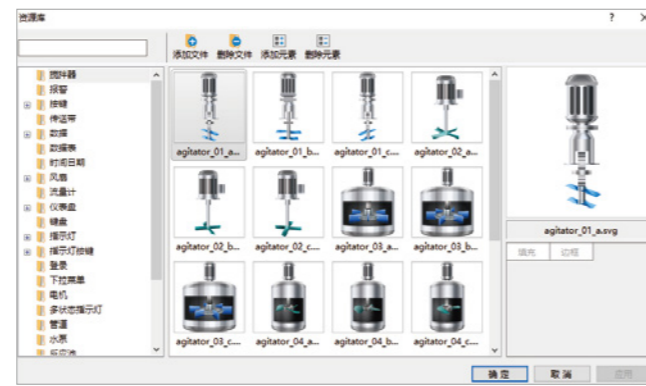
Powerful Recipe Management

The new recipe management is simple and easy to edit. It supports editing recipe data on the touch screen, including inserting, deleting, importing, exporting and other operations.



Rich Material Library

The newly designed material library has a variety of materials to choose from, and pictures can be found through color, shape and so on.



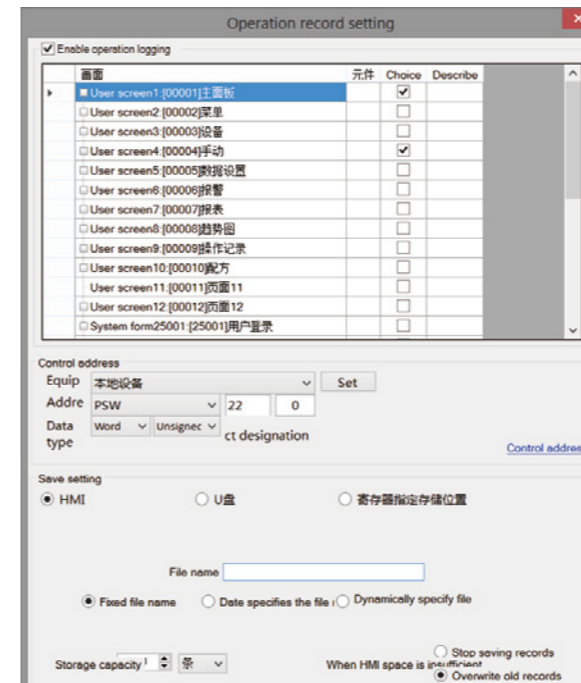
Detailed Report Management

The report management method supports the display of tables in forward order/ reverse order. You can query data or alarm records by date and keyword. It can be imported/exported to USB flash disk.



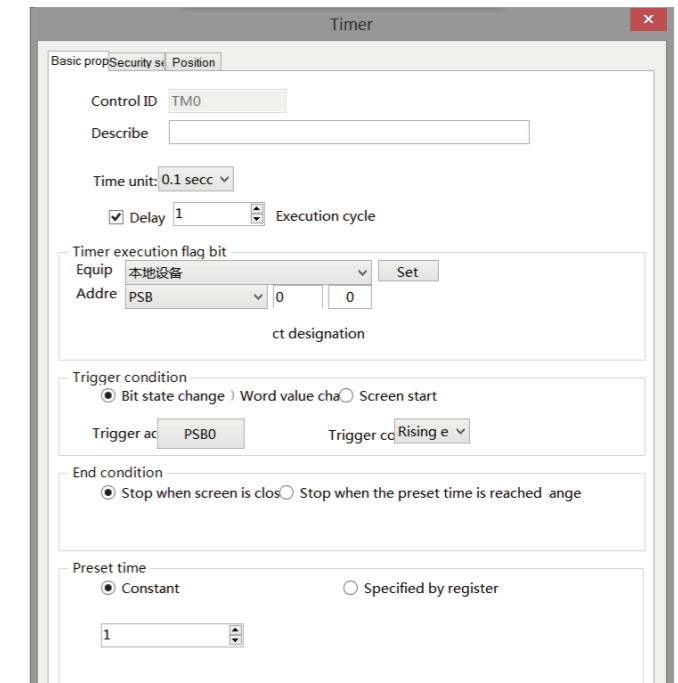
Traceable Operation Records

Record user login and operation contents, which can be exported to USB flash disk to help analyze process flow and troubleshooting.



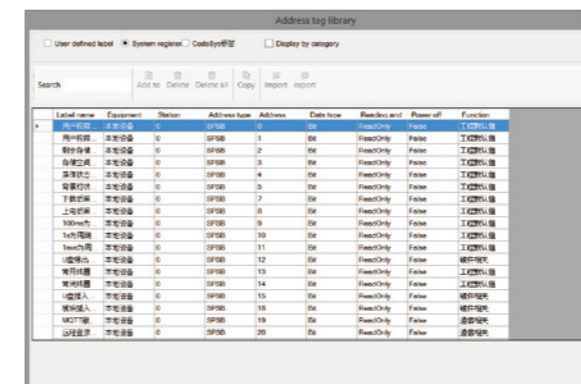
Schedule

With timer function, it can set the time and execute it regularly, making the on-site operation more efficient.



Address Label Library

The text, address and equipment in the program shall be uniformly managed to facilitate searching and checking.



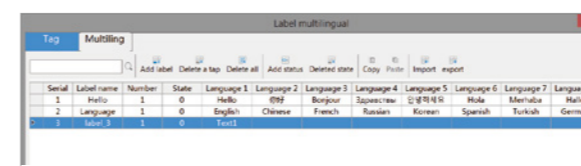
Multiple Encryption Methods

A variety of encryption methods, including delay, interlock, user level and installment payment.



Multilingual Management

It supports up to 8 languages and is more convenient to use through multi-language label library management.



Support C Language Programming

Support C language function block, which are simple, fast and easy to learn, and support online debugging.